

EDILGRAPPA srl

Via Callesello, 4 31030 Borso Del Grappa (TV) Italia

Tel. 0423-910122 Fax 0423-542122

E-mail: cut@edilgrappa.com <http://www.edilgrappa.com>

Pag.1 di pag.3

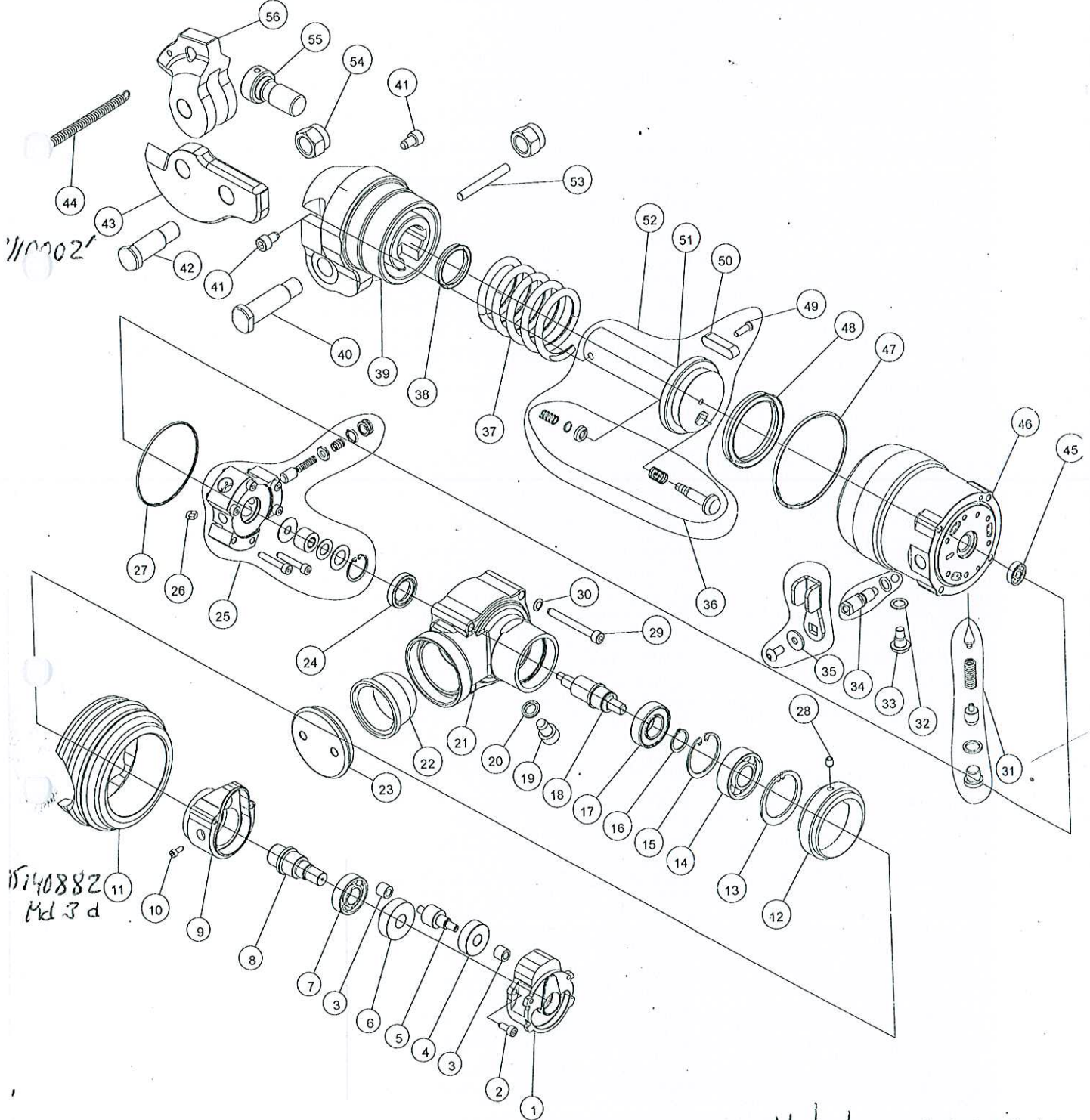
Revisione nr.0 Data:22/04/08

LISTINO RICAMBI

CESOIA PC12 A BATTERIA (ORGANI IDRAULICI PER HITACHI) Cod.1.50.1937

NB12

13110001



Motorhus 95140861

NB 12

PRO CUT 12

POS	CODE	DESCRIPTION	PC.
1	1 60 230	DIE	2
2	1 60 715	SCREW	2
3	1.10.230	SPRING FOR RETURN KNIFE	1
4	1.10.3920	MOBILE KNIFE	1
5	1.10.3931	PUSH PIN FOR KNIFE <i>MCSE *</i>	1
6	1.10.3924	CENTRAL PIN	1
7	1.10.3919	FIXED KNIFE	1
8	1.10.3925	PIN FOR FIX KNIFE	1
9	1.10.3921	SUPPORT	1
10	1.30.491	GASKET <i>MCSE *</i>	1
11	1.10.581	PISTON RET. SPRING	1
12	1.10.3922	PISTON	1
13	1.10.194	DOWN SPRING	1
14	1.60.306	ELASTIC RING	1
15	1.10.238	UPPER SPRING LOCKING	1
16	1.10.196	UPPER SPRING	1
17	1.10.237	RETURN VALVE	1
18	1.10.4042	VITE BLOCCO TESTA	1
19	1.70.006	WASHER	1
20	1.60.062	STEEL SPHERE <i>4mm</i>	2
21	1.10.4149	PIN FOR BLOCK SPHERE	1
22	1.10.246	SPRING	1
23	1.10.4148	PLATE FOR VALVE	1
24	1.60.361	WASHER	1
25	1.10.4147	CAP	1
26	1.60.823	SCREW STEI	1
27	1.30.016	OR	4
28	1.10.4044	MANUAL RETURN VALVE	1
29	1.10.4043	MANUAL RETURN LEVE	1
30	1.60.702	WASHER	1
31	1.60.937	SCREW	1
32	1.30.508	OR	1
33	1.30.017	OR	3
34	1.10.3704	MEMBRANE <i>*</i>	1
35	1.10.3699	CAP FOR TANK	1
36	1.10.3980	CYLINDER	1
37	1.30.524	OR	1
38	1.30.385	GASKET <i>*</i>	1
39	1.60.028	TONGUE	1
40	1.60.849	SCREW	1
41	1.10.045	CAP FOR VALVE	3
42	1.10.037	SPRING	3
43	1.10.042	PUMP FOR VALVE	3
44	1.10.038	SPRING	3
45	1.10.046	PISTON FOR PUMP	3
46	1.60.068	BEARING	1

149905

519908

9910

749811

9934

9938

POS	CODE	DESCRIPTION	PC.
47	1.10.041	BODY PUMP	1
48	1.60.002	BEARING	1
49	1.60.310	WASHER	1
50	1.60.311	WASHER	1
51	1.60.309	SEEGER RING	1
52	1.10.122	FILTER	3
53	1.10.123	SUPPORT	3
54	1 60 122	SCREW	6
55	1.60.014	OIL SEAL <i>95/49955</i>	1
56	1.10.3697	TANK	1
57	1.60.337	GASKET	1
58	1.50.506	CAP	1
59	1.60.013	BEARING	1
60	1.30.461	VIN	1
61	1 60 3021	SCREW	4
62	1.60.410	WASHER	4
63	1.60.314	WASHER	4
64	1.60.480	SCREW	4
65	1.70.025	SCREW	2
66	1.30.037	MOTOR COVER	2
67	1 60 207	DIE	2
68	1 60 319	WASHER	2
69	1.30.034	MOTOR COVER	1
70	1.60.324	COMP. RING	2
71	1.60.003	BEARING	1
72	1.40.906	STATOR	1
73	1.60.382	WASHER	2
74	1.60.949	SCREW	2
75	1.40.905	ROTOR	1
76	1.90.003	ALL PLATE	1
77	1.60.131	SCREW	4
78	1.10.099	SPRING	2
79	1.10.103	SUPPORT FOR BRUSHER	2
80	1.60.322	WASHER	2
81	1.60.144	SCREW	2
82	1.30.005	BRUSHER	2
83	1.10.696	PLATE FOR BRUSHER	2
84	1.10.811	WASHER	4
85	1.60.143	SCREW	4
86	1.60.147	SCREW	4
87	1.30.039	HANDLE DX	1
88	1.40.012	CABLE W/ PLUG	1
89	1.30.021	CHOCK	1
90	1.40.020	SWITCH	1
91	1.40.002	ANTI NOISE FILTER	1
92	1.60.146	SCREW	4
93	1.30.040	HANDLE SX	1

*

POS	CODE	DESCRIPTION	PC.
94	1 60 129	SCREW	2
95	1.30.020	CABLE BLOCK	1
96	1.10.4104	PROTECTION	1
97	1.60.3017	SCREW	1