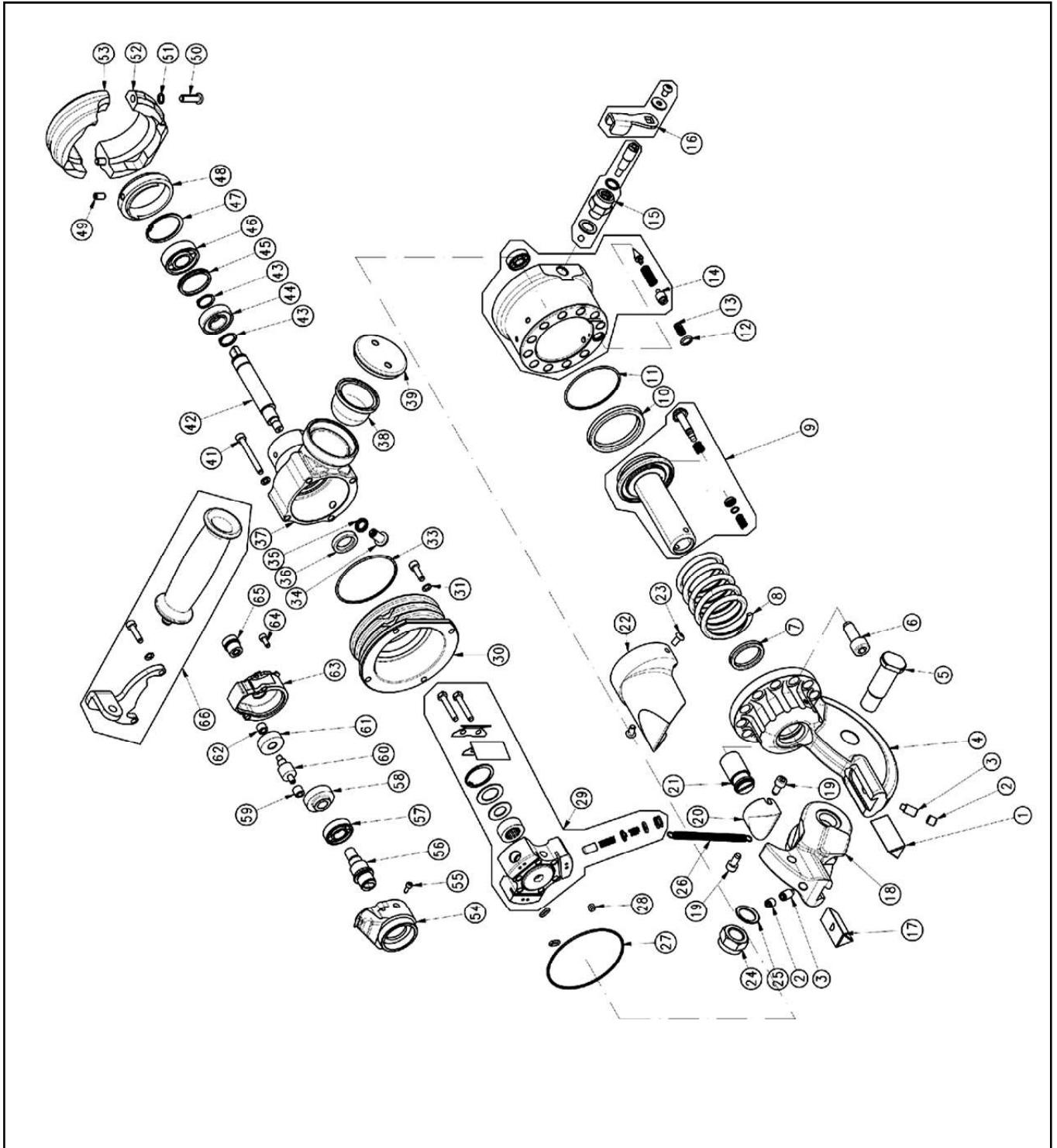


# EXPLODED VIEW – NB16 BATTERY CUTTER

## HYDRAULIC PARTS

CODE 1.50.2572



# EXPLODED VIEW – NB16 BATTERY CUTTER

## HYDRAULIC PARTS

CODE 1.50.2572

#	P/N	Rev.	Item	Q.ty
1	1.10.233	3	LOWER BLADE	1
2	1.60.829	1	GBRUB SCREW	2
3	1.60.2056	0	SCREW	2
4	1.10.3557	6	HEAD	1
5	1.10.3559	2	PIN	1
6	1 60 112	0	SCREW	11
7	1.30.070	0	GASKET	1
8	1.10.231	0	PISTON RETURN SPRING	1
9	1.50.619	0	PISTON ASSEMBLY	1
10	1.30.032	0	GASKET	1
11	1.30.045	2	O-RING	1
12	1.30.225	2	O-RING	1
13	1.10.248	1	SPRING	1
14	1.50.1942	0	CYLINDER ASSEMBLY	1
15	1.50.1932	0	MANUAL RETURN VALVE ( VALVE PART )	1
16	1.50.1933	1	MANUAL RETURN VALVE ( LEVER PART )	1
17	1.10.269	3	UPPER BLADE	1
18	1.10.3558	5	UPPER HEAD	1
19	1 60 3013	0	SCREW	2
20	1.10.624	3	HEAD-PUSHING CAM	1
21	1.10.579	1	SETTING SCREW	1
22	1.30.546	1	PROTECTION COVER	1
23	1.60.937	1	SCREW	2
24	1.60.201	0	NUT	1
25	1.60.900	0	WASHER	1
26	1.10.230	0	RETURN SPRING	1
27	1.30.046	2	O-RING	1
28	1.30.017	2	AO-RING	3
29	1.50.511	1	PUMP ASSEMBLY	1
30	1.10.4501	3	TANK SUPPORT	1
31	1.60.410	0	WASHER	2
32	1 60 123	0	SCREW	2
33	1.30.425	0	O-RING	1
34	1.50.923	2	MAGNETIC CUP	1
35	1.60.3046	0	BONDED SEAL	1
36	1.60.083	0	OIL SEAL	1
37	1.10.4496	4	OIL TANK	1
38	1.30.296	0	MEMBRANE	1
39	1.10.1871	0	MEMBRANE COVER	1
40	1.60.314	0	WASHER	4
#	P/N	Rev.	Item	Q.ty
41	1 60 811	0	SCREW	4

42	1.10.4502	2	SHAFT	1
43	1.60.396	0	SEEGER	2
44	1.60.079	0	BEARING	1
45	1.10.4625	1	BEARING ADAPTER	1
46	1.60.3039	0	BEARING	1
47	1.60.3045	2	SEEGER	1
48	1.10.4495	2	ADAPTOR RING	1
49	1.60.3156	0	SCREW	1
50	1.60.3036	0	SCREW	2
51	1.60.303	0	WASHER	2
52	1.10.6805	3	SEMIRING 1	1
53	1.10.6806	3	SEMIRING 2	1
54	1.10.4488	6	GEAR BOX TOP HOUSING	1
55	1.60.3053	0	SCREW	1
56	1.10.4421	4	STRANSMISSION SHAFT	1
57	1.60.082	0	BEARING	1
58	1.10.973	2	TOOTHED GEAR	1
59	1.10.980	2	BUCKLE	1
60	1.10.6391	1	TOOTHED PINION	1
61	1.10.977	3	TOOTHED GEAR	1
62	1.10.6392	1	BUCKLE	1
63	1.10.4487	7	LOWER GEAR BOX HOUSING	1
64	1.60.107	1	SCREW	2
65	1.10.5008	0	HELICAL PINION	1
66	1.50.1914	2	HANDLE	1



SV

Inga delar av denna manual får kopieras eller reproduceras utan föregående skriftliga godkännande från Edilgrappa. Innehållet i denna manual kan vara felaktigt eller ofullständigt. Edilgrappa åtar sig inget ansvar för felaktigheter, ofullständighet eller missförstånds som beror på brister i texten. Edilgrappa kan utan föregående meddelande ändra eller modifiera manualen.